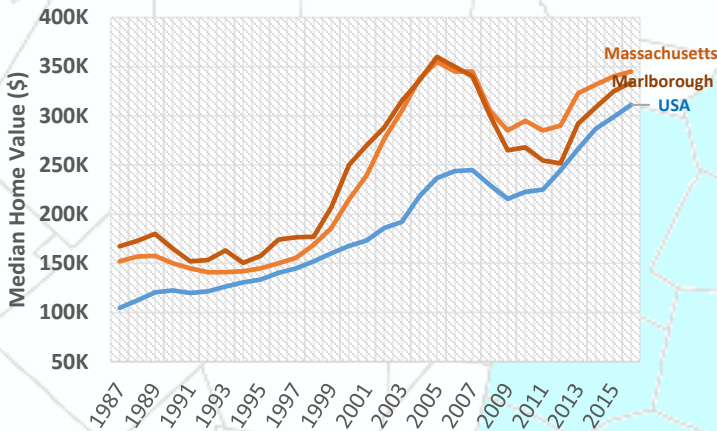
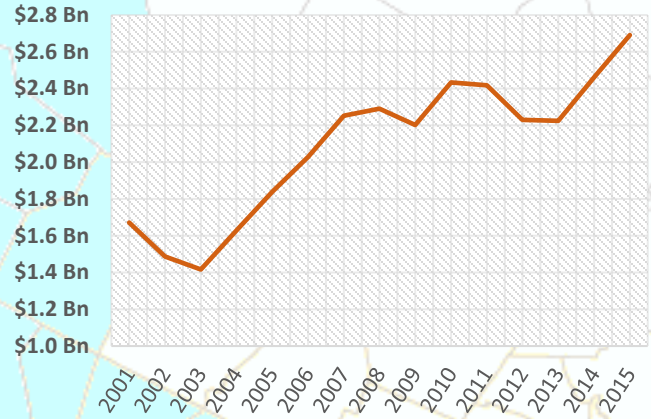


Rising Home Values



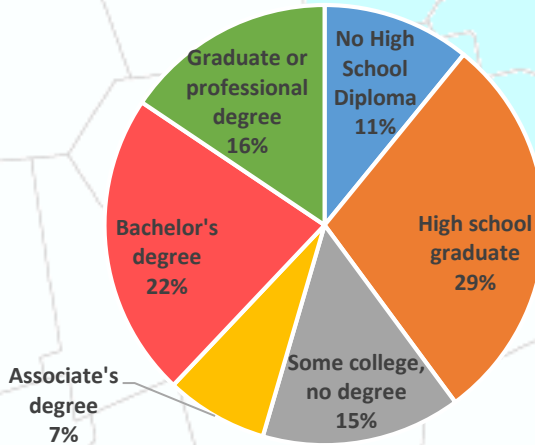
In February 2017, the median single family home in Marlborough sold for \$334,500¹. This is slightly higher than the state median for February which was \$319,000¹ and national median for the same month which was \$228,200².

Increasing Payroll



From Q2 2015 to Q2 2016, the payroll for all places of employment in Marlborough was \$2,600,425,723.³ As the town has recovered from the recession the payroll has increased significantly in the last few years.

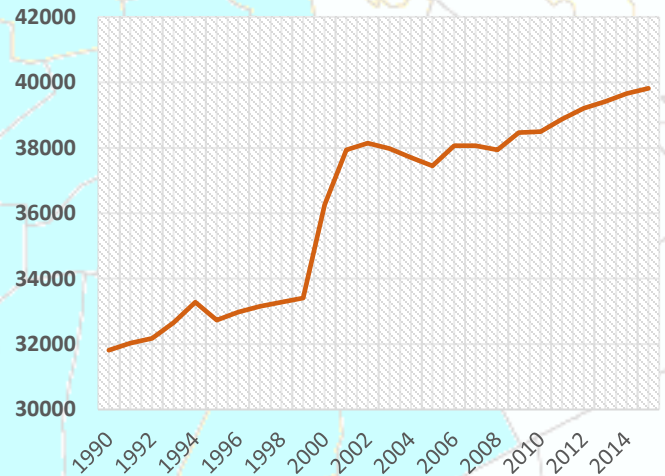
Highly Educated



2011-2015 ACS (U.S. Census Bureau)

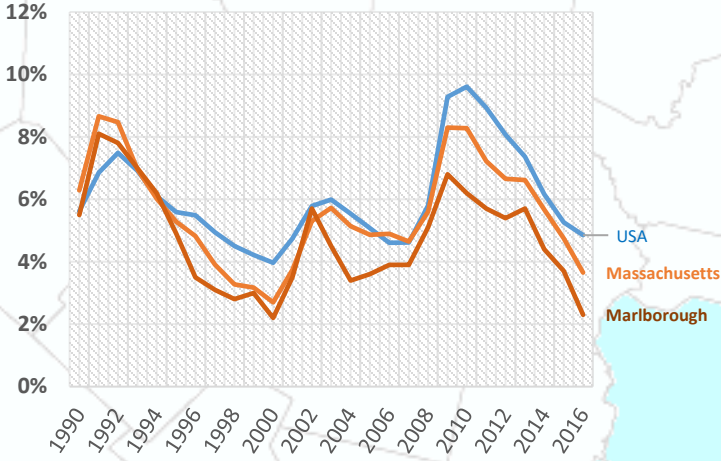
Marlborough has a highly educated population compared to the nation with 38% of residents having a bachelor's degree or higher. During the same time, only 29.8% of all people in the U.S. had at least a bachelor's degree.⁴

Growing Population

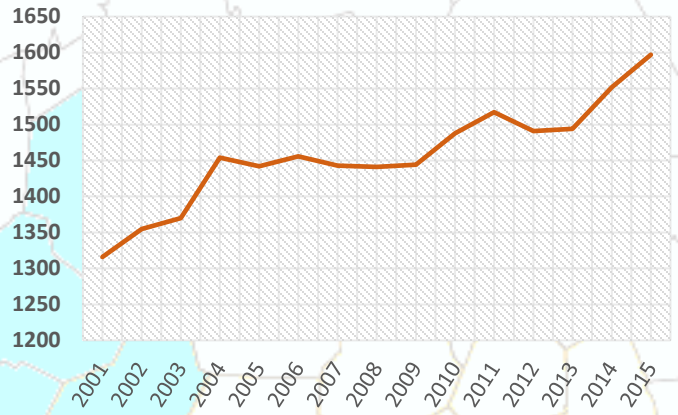


The population of Marlborough has been increasing at a steady pace. In 2000, the population of Marlborough was 36,255 this increased to 38,499 by 2010, and in 2015, the population of Marlborough was estimated to be approximately 39,818.⁵

Low Unemployment



Expanding Employers

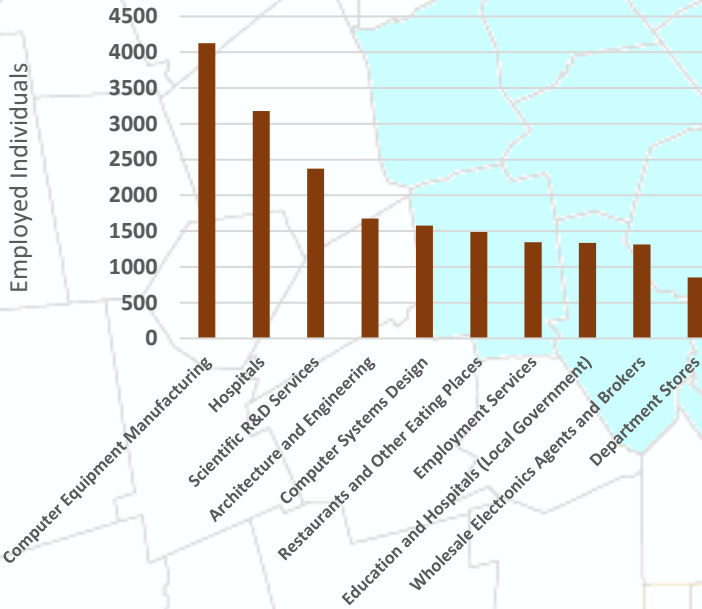


In February 2017, the unemployment rate in Marlborough was 3.6%. This is just above the state and 495/MetroWest regional unemployment rates, which were both 3.4%, and much lower than the national unemployment rate of 4.8%³

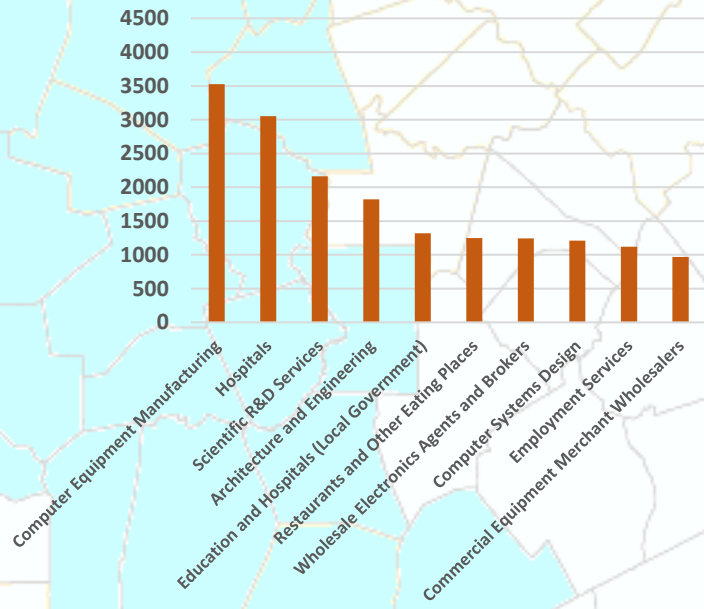
The number of employers in Marlborough has been increasing at a steady rate. In 2001, there were 1,316 employers in the town, and by Q2 2016 this number had increased to 1,625 indicating a 23.5% increase.³

Top Ten Industries In Marlborough

2015



2010



Top Ten Industries data and analysis conducted by the Public Policy Center at UMass Dartmouth for the 495/MetroWest Partnership in support of the 495/MW Suburban Edge Community Commission utilizing 2014 US Census Bureau Local Employment Dynamics. For more information on these data sets please visit <http://lehd.ces.census.gov/>

Sources:

Mass.gov Municipal Databank <http://www.mass.gov/dor/local-officials/municipal-databank-and-local-aid-unit/databank-reports-new.html> (Line graph municipal data), FRED Economic Data St. Louis Fed <https://fred.stlouisfed.org/series/MSPUS> 1. The Warren Group <http://www.twgstats.com/tssub/start.asp> 2. Ycharts Average US Home Values https://ycharts.com/indicators/sales_price_of_existing_homes 3. Mass.gov Labor and Workforce Development <http://www.mass.gov/lwd/economic-data/> 4. US Census Bureau <https://www.census.gov/> 5. UMASS Donahue Institute <http://www.donahue.umassp.edu/news-events/institute-news/new-population-estimates-for-mass-released-interactive-map-available>